



Jewish Federation  
OF DELAWARE

**Thanks to you**  
**WE GROW**  
**STRONGER TOGETHER**

2018-2019 Impact Report

# Mission, Vision and Goals







## OUR MISSION

Mobilize the Jewish Community to address issues, meet needs and build an agenda for the future.

## OUR VISION

Bring Jewish people together into a community coalition, grounded in Jewish teaching and heritage, to strengthen the State of Israel, the global Jewish family and local organizations in order to further the survival of the Jewish people.

## OUR GOALS

-  Foster identification with our Jewish teaching and heritage to inspire an informed and involved community.
-  Build an agenda for the future with clearly defined priorities.
-  Take responsibility for raising funds which meet mutually agreed upon goals.
-  Allocate and manage the community's resources based upon the community agenda.
-  Provide a structure for the Jewish community to interact with the non-Jewish community.
-  Develop Jewish leadership.

# Table of Contents

03/	Message from our Leadership
04/	Federation in Action
05/	Federation Departments & Programs
07/	2018 Annual Campaign
08/	Women's Philanthropy
11/	CONNECT Young Adult Network
12/	Community Outreach
15/	PJ Library & Shalom Baby
16/	Israel & Overseas
19/	Jewish Community Relations Committee
20/	Holocaust Education Committee
22/	Facts and Figures
24/	Communicating Our Message
26/	We Grow Stronger TOGETHER
27/	Beneficiary Agencies & Partners
28/	Leadership
29/	Committees & Chairs
30/	Total Financial Resources
31/	Distribution & Funding
32/	Jewish Fund for the Future
35/	Create a Jewish Legacy
36/	Federation Professional Team
37/	Awards and Recognition
38/	The Year in Pictures

## RECOGNITION

The Jewish Federation of Delaware gratefully acknowledges the generosity of Delmarva Power and Highmark Delaware in the production of this report.



PHOTO CREDITS:  
Jewish Federation of Delaware, our beneficiary agencies,  
Jewish Federations of North America,  
Donna Harlev and Brad Glazier

DESIGN: Tornek Design Associates

# Message From Our Leadership

The Talmud teaches, “The world is too heavy for anyone to carry alone.” With these words we are reminded of the importance of our collective responsibility and shared values of tikkun olam (repairing the world), tzedakah (charity and social justice) and Torah (Jewish learning). Federation ensures a vibrant Jewish community today and in the future.

The 2018-2019 Gratitude Report to the Community is a journey through the past year highlighting the impact of your generous support, but it also serves as a testament to the power of working TOGETHER. Thanks to the spirit of partnership that exists in our community, we have helped thousands of people locally and globally. With our network of beneficiary agencies and international partners who are on the ground 24/7/365, we support a vital safety net that quickly identifies emerging needs and life-threatening emergencies and we have the ability to share information and mobilize immediate response when necessary.

Federation also supports programs that enhance Jewish life and build Jewish identity, bringing together the dedicated individuals and institutions that make our community strong. TOGETHER we support formal and informal educational initiatives and help our youth and future leaders form strong connections to their Jewish heritage and to the people and land of Israel.

Jewish Federation of Delaware is a product of understanding the fundamental principle that “each Jew is responsible one for the other.” We understand that by working TOGETHER we can accomplish so much more than any one person can working alone. This guiding vision has enabled Federation to enhance, educate, assist and touch the lives of thousands of Jews in Delaware and the Brandywine Valley, in Israel and around the world in so many ways.

We thank you for your generous support – through the Annual Campaign, supplemental giving and charitable funds through Jewish Fund for the Future and the Create A Jewish Legacy program – that is an investment in Jewish life. The return on investment is a strong, vibrant, caring, warm and welcoming Jewish community Today, Tomorrow and TOGETHER.

L'Shalom,



  
Seth J. Katzen,  
Chief Executive Officer



  
William Wagner,  
President

*In our commitment to serve as the wise stewards of your philanthropic dollar, we are proud to report that your Federation continues to receive the highest level of recognition for being a trusted and transparent organization in each of the industry's key evaluators – GuideStar, Charity Navigator, and Great Nonprofits.*



Jewish Federation of Delaware has earned GuideStar's Platinum Seal of Transparency. GuideStar is the leading source of nonprofit information.



Jewish Federation of Delaware has received a Four-Star Rating on Charity Navigator, the nation's largest and most-utilized evaluator of charities. We are one of only ten Four-Star charities in Delaware.



Jewish Federation of Delaware has been honored with the prestigious Top-Rated Award annually from 2012- 2019 by Great Nonprofits, the leading provider of user reviews about nonprofit organizations.

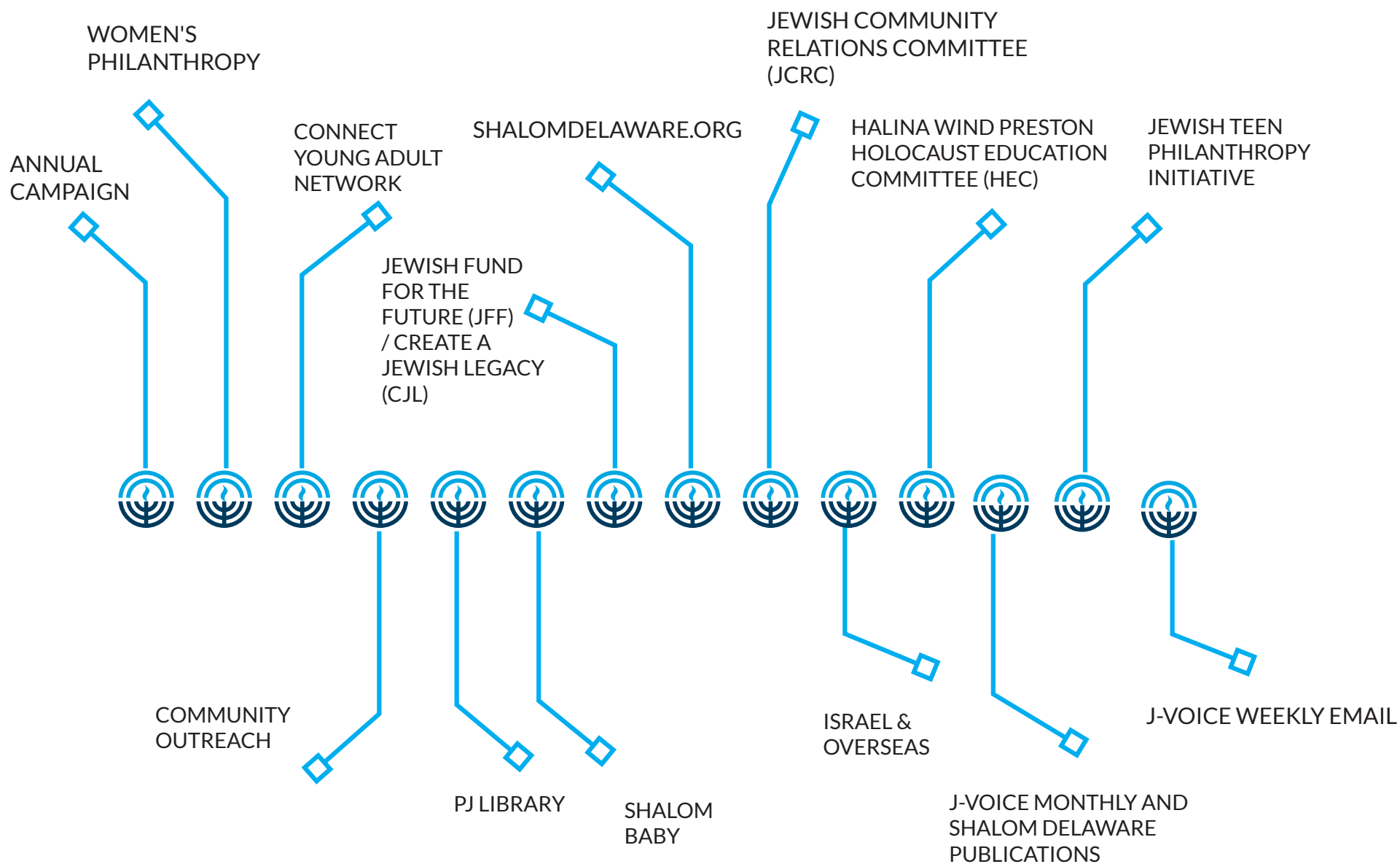
# Federation in Action

Every day, Jewish Federation of Delaware makes our community and the world a better place by acting on our shared Jewish values of **caring and compassion (chesed)**, **facilitating Jewish learning (Torah)**, **repairing the world (tikkun olam)** and **social justice (tzedakah)**.

We unify and connect the Jewish community through effective fundraising and philanthropic resources, planning, collaborating with organizations, providing essential services and activities and developing leaders for our future.



# Federation Departments, Programs & Initiatives





Kyle  
Nisbet



Jewish Federation  
OF DELAWARE

# Annual Campaign

**Federation's Annual Campaign** allows us to exercise the tremendous power within ourselves to make a difference in the lives of others. The Annual Campaign improves the world and brings healing and hope to so many.

Our 2018 Annual Campaign raised \$1,815,000, an 11% increase from prior year. Federation is projecting to raise more than \$1,900,000 million for the 2019 Annual Campaign from approximately 1,200 donors, the largest campaign in our storied history. Contributing factors include the generous increased support of our donors, a strong commitment from campaign leadership, as well as the continuation of a successful Challenge Match for increased giving.

Federation Past-President, Suzanne B. Grant, is completing her term as Jewish Federations of North America National Campaign Chair. She also sits on the JFNA Board of Trustees and previously served as Chair of JFNA's Investment Committee and was the co-chair of the 2014 International Lion of Judah Conference.

A special thanks to our donors who give life to our Federation and our affiliated agencies, and whose gifts make it possible to provide a full range of critical social services, spiritual and educational programs, feed the hungry, care for the vulnerable and provide a life of dignity for our extended Jewish family.

## Highlights

**October 4, 2018** - Campaign Kickoff with Charlie Harary

**October 22-24, 2018** - JFNA General Assembly, Tel Aviv, Israel

**December 13, 2018** - Major Gifts Event at DuPont Country Club with Jeff Goldman

**January 27, 2019** - Super Sunday

**April 15, 2019** - Business Professionals Breakfast with Rodger Levenson, President & CEO of WSFS Bank

**June 6, 2019** - JFD 84th Annual Meeting

## Committee Chairs

**Annual Campaign Chair:** Lisa Dadone-Weiner

**National Campaign Chair:** Suzanne B. Grant



International Lion  
& Judaic Conference

International Lion  
& Judaic Conference

International Lion  
& Judaic Conference

KWF AWARD  
WINNER

458



# Women's Philanthropy

**Women's Philanthropy** inspires all women in our community to give to their full potential – by sharing their time, knowledge, skills and financial commitment with others. Women's Philanthropy is a sisterhood of women united by acts of kindness and generosity who are dedicated to ensuring the continuity and vitality of our Jewish community. Women's Philanthropy contributed nearly half of the total raised by the of Annual Campaign

Two women from our community currently occupy seats on the National Women's Philanthropy Board as well as one who serves on the JFNA Executive Committee. Additionally, community leader Suzanne Barton Grant serves as the National Campaign Chair for JFNA.

## Highlights

**October 7, 2018** - Lion of Judah Brunch at the home of Suzanne B. Grant

**November 4, 2018** - Jewish Genetics Symposium

**January 13-15, 2019** - International Lion of Judah Conference in Miami, FL

**May 15, 2019** - Women of Wisdom (WOW) Event with Janice Kaplan

## Committee Chairs

**Women's Philanthropy Co-Chairs:** Michelle Silberglied & Jennifer Steinberg

**Lion of Judah Chair:** Barbara Blumberg

**WOW Event Co-Chairs:** Sue Komins, Elisa Komins Morris and Debbie Komins Ross

**National Women's Philanthropy (NWP):** Barbara Blumberg and Connie Sugarman



# CONNECT: Young Adult Network

**CONNECT: Young Adult Network** engages Jewish singles, couples and families in their 20's, 30's and 40's in social, educational, philanthropic and social action initiatives. The future of the Jewish community depends on the development of new leaders and on the philanthropic efforts of this generation and those who follow.

## Highlights

**August 26, 2018** – Stretch and Sketch Yoga Program

**December 4, 2018** – Hanukkah Happy Hour

**March 12, 2019** – Community Service Project: Hamantaschen and Mishloach Manot Making

**March 14, 2019** – Mishloach Manot delivery to Kutz Senior Living Campus

**April 24, 2019** – Chocolate and Wine Seder

Ongoing work includes:

- Shabbat Dinners
- Social Gathering
- Coffee Engagements

## Committee Chair

Steering Committee Chair: Maddie Driban



# Community Outreach

**Federation** helps people find their place in our Jewish community. All of our programs and services serve as ways to get involved, but we also have specific initiatives to connect with Jews in our community like Shalom Baby, PJ Library, One Happy Camper and j-VOICE Monthly.

## Highlights

**August 14, 2018 - 14, 2018** – Jewish Heritage Night at the Blue Rocks

**October 28, 2018** – Stand with Pittsburgh Community Vigil at UD

**November 8, 2018** – Rotary Club Newark Presentation

**December 9, 2018** – Lisa Loeb Concert at Arden Concert Guild

**January 25, 2019** – Federation Shabbat at Temple Beth El

**January 31, 2019** – Delaware in Delray Luncheon

**February 26, 2019** – Distant Cousins Concert at Wilmington Brew Works

**March 13-17, 2019** – Rehoboth Beach Jewish Film Festival (RBJFF)

**March 31-April 2, 2019** – RBJFF Federation Encore! Series in Wilmington

**June 6, 2019** – 84th Annual Meeting

**June 25, 2019** – Grammy Award-Winning Singer/Songwriter Ari Hest



# A HOOPOE SAYS OOP!

Animals of  
Israel

James M. El-Mechaieq  
Illustrated by  
Leana Hultman

# PJ Library & PJ Our Way

**PJ Library** is an international award-winning Jewish family engagement program designed to strengthen the identities of Jewish families and their relationship to Jewish community. PJ Library offers free, high-quality Jewish books and music each month to children between the ages of six months through eight years of age. We also now have a PJ Our Way program for children ages 9 through 12. The name “PJ” stands for “pajamas” and invokes that time at the end of the day when parents and children strengthen their bond through love and learning by cuddling up with a book.

**409 children are subscribed to PJ Library and PJ Our Way throughout Delaware and the Brandywine Valley**

## Highlights

**September 16, 2018** – Apples & Honey & Hayride

**October 7, 2018** – PJ Pumpkin Patch

**October 14, 2018** – PJ Our Way Wilm U Studio Tour

**November 5, 2018** – Author Marjorie Ingall Program

**November 9, 2018** – Rockin’ Shabbat, Temple Beth El

**December 2, 2018** – LatkeFest

**December 9, 2018** – Tikkun Olam Brunch

**January 13, 2019** – PJ Our Way 5 Below Field Trip

**January 20, 2019** – PJ MLK Sunday Fun Day

**January 25, 2019** – Federation Shabbat Story Time

**January 27, 2019** – Super Sunday Story Time

**February 3, 2019** – PJ Goes Wild! at Delaware Museum of Natural History

**May 19, 2019** – PJ Our Way Sharing is Caring

# Shalom Baby

Shalom Baby is an exciting program designed to welcome parents and their newborns and newly-adopted children in Delaware and the Brandywine Valley to our Jewish community. Shalom Baby is also a wonderful way to help new parents find support and build a social connection during this special time in their life. A Shalom Baby Gift Bag, full of fun and helpful gifts, is hand-delivered by a wonderful Shalom Baby Ambassador.

## Highlights

**August 27, 2018:** Shalom Baby Superheroes

**September 23, 2018:** Shalom Baby Sukkah Decorating

**May 5, 2019:** Shalom Baby Shower

## Committee Chairs

**PJ Library Chair:** Taylor Clearfield

**Shalom Baby Co-Chairs:** Lisa Kornblum and Briana Kopin



Jewish Federation  
OF DELAWARE



# Israel and Overseas

**Jewish Federation of Delaware** is part of the global Jewish partnership with Israel at its heart. Our relationship with Israel is not strictly one of donor to recipient but one of people to people.

**Community Shlichah** – A shlichah is an emissary, sent to Delaware through a partnership with the Jewish Agency for Israel that strengthens our community’s connection to Israel and the Israeli people. The shlichah provides educational programming for the entire Jewish community and also serves as an advocate for Israel within both the Jewish and broader community.

**Partnership2Gether (P2G)** – P2G has become the paradigm for successfully partnering global Jewish communities directly with Israeli communities—the Delaware/Arad partnership connects us communally, organizationally and personally. The primary goal of P2G is to develop programs that will build bridges in the area of education, tourism, economic development and volunteerism.

**Ethiopian National Project (ENP)** – The Ethiopian National Project (ENP) impacts the lives of countless Ethiopian-Israelis, helping them make the transition to Israeli life and society. ENP provides social and educational opportunities from birth to bagrut (matriculation).

**Israel Action Network (IAN)** – Initiative to address the urgency of responding to a growing assault by governments and NGOs on Israel’s legitimacy.

**Birthright Israel** – Taglit-Birthright Israel provides a gift of first time, peer group, educational trips to Israel for Jewish adults 18 to 35.

## Highlights

**August 9, 2018** – Welcomed Community Shlichah, Daniella Buchshtaber, to Delaware

**September 7, 2018** – Video of “New Year, New Flavors” with Early Childhood Center

**October 5, 2018** – American Hebrew University Briefing with Professor Benny Chefetz

**December 16, 2018** – Cooking with our Shlichim

**January 22-24, 2019** – Shlichut Conference in Washington DC

**March 1, 2019** – Facebook Live giveaway of MATANA box of Israeli products

**March 20, 2019** – Live stream Shlichim program on Israeli elections

**March 31-April 2, 2019** – RBJFF Federation Encore! Series in Wilmington

**April 9, 2019** – Women Issues in Israel with Idith Shaham

**April 14, 2019** – “Ben-Gurion, Epilogue” Special Screening with American Associates Ben-Gurion University of the Negev

**May 1, 2019** – Yom Hazikaron Program led by Delaware Teens

**May 5, 2019** – Wedding of Daniella Buchshtaber and Noam Gliksman

**May 8, 2019** – Yom Ha’Atzmaut Community Celebration

## Committee Chairs

**Israel & Overseas Committee Chairs:** Michelle Margules & Gael Szymanski

**Partnership2Gether Chair:** Robin Karol-Eng



Jewish Federation  
OF DELAWARE

# Jewish Community Relations Committee

The JCRC serves as the public affairs arm of the Jewish Federation of Delaware and works with government leaders and the media as an advocate for Israel and brings speakers on Israel and issues of importance to the Jewish community. It also participates in programs and coalitions to enhance good relations among different religious and cultural groups. The JCRC advances the general welfare of the community by;

- Promoting positive relations and interactions with other cultural, religious and ethnic groups
- Participating in community coalitions
- Monitoring and responding to activities of extremists and hate groups
- Advocating civil rights for all members of the community
- Fighting all forms of prejudice and discrimination
- Creating educational programs on domestic issues ~ human rights and constitutional protection

## Ongoing work of the JCRC includes;

- Chaplaincy visits to unaffiliated Jews at Christiana Hospital, bringing cheer & Shabbat bags created by Hedy Mintz & Michelle Margules
- Attend monthly meetings of the Delaware Association of Rabbis and Cantors (DERECH)
- Discussions with Delaware elected officials about Anti-BDS legislation, coordinated by Russ Silberglied
- Attend Governor's Council on Interfaith Relations Coordinate programs in collaboration with the Israel & Overseas Committee
- Participate in regular calls/webinars with JFNA, JCPA, JCRC Directors and other advocacy and policy making organizations
- Handle anti-Semitic incidents as they arise in collaboration with ADL

## Highlights

July 1, 2018 – FED Talk: Ambassador Dani Dayan

September 17, 2018 – Candidates Forum

November 4, 2018 – Jewish Genetics Symposium

December 10, 2018 – JCRC Leadership Briefing with Senator Tom Carper

January 4, 2019 – FED Talk: Screening of My Dear Children

January 16, 2019 – FED Talk: Arab Women in Start-up Nation

February 7, 2019 – FED Talk: Israel's Edge in Innovation & Technology with PICC

February 10, 2019 – Photo Exhibit, The Diverse Jewish Community of Buenos Aires

February 25, 2019 – JCRC Leadership Briefing with Senator Chris Coons

March 7, 2019 – Author Hasia Diner at Hagley Museum

March 10, 2019 – One Book, One Community with Author Lauren Belfer

March 17, 2019 – Community Vigil at Islamic Society of Delaware

April 22, 2019 – JCRC Leadership Briefing with Representative Lisa Blunt-Rochester

## Committee Chairs

Jewish Community Relations Committee Co-Chairs:

John Elzufon and Jennifer Steinberg

1,119

Donors to the 2018 Annual Campaign

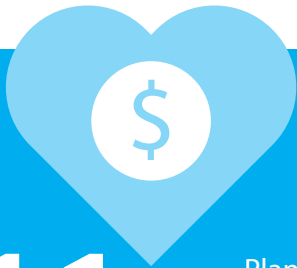
\$1,815,002

Raised for the 2018 Annual Campaign

70



Countries receive humanitarian needs and services to enhance Jewish life



211

Planned giving endowments

2,500

J-VOICE Monthly printed copies each issue

5,700

PJ Library Books delivered annually to children in Delaware

21

Years of the Delaware/Arad Partnership



21,827

PJ Library Books have been delivered to children in Delaware



52

Lion of Judah Women (\$5000+ women)

12

Dedicated women attended the International Lion of Judah Conference

50

community leaders attended our Leadership Training



409

Active PJ Library subscriptions throughout Delaware

7

Holocaust survivors in Delaware received complementary JFS services

132

High school Delaware teens reached through BBYO

5,000

printed copies of Shalom Delaware

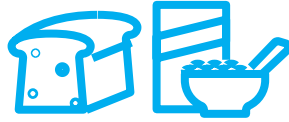


233

Children enrolled at the Siegel JCC Early Childhood Center (ECC)

46

Community scholarships awarded



250

Households benefited from JFS Food Pantry

87

Overnight Jewish camp subsidies to date through One Happy Camper

36

UD Hillel students participated in long-term fellowships

115

Women attended the Spring WOW Event

3,500

Kosher meals served annually at UD Chabad

135

Residents at Kutz Senior Living Campus

115

Students attend weekly Shabbat at UD Hillel

2,064 JCC Memberships

120

UD students went on Birthright Israel

100+

Children served through KidsPlace

538

Camp JCC families

1,791 Jewish student interactions by UD Hillel

538

Camp JCC families

1,479

Unduplicated clients served at Jewish Family Services of Delaware

82

Average age of resident at Kutz Senior Living Campus

15

Teens attended BBYO's International Convention

323

JFS older adult clients received support services needed to age in place



LOUIS REDDING CITY/COUNTY BUILDING

REDDING

JAN

# Holocaust Education Committee

The **Halina Wind Preston Holocaust Education Center (HEC)**, a part of JCRC, is an interfaith volunteer group comprised of Holocaust survivors and their families, Holocaust scholars, teachers, clergy and community advocates. Their mission is to educate the community on the causes and events of the Holocaust, so that its lessons may prevent such a tragedy from happening again. The HEC established the first Garden of the Righteous Gentiles in the United States. The Garden honors non-Jews who placed their own lives and those of their families in jeopardy to save Jews during the Holocaust. The committee offers Holocaust education grants through the Dr. Arnold D. Kerr Holocaust Education Endowment Fund. Grants are restricted for Holocaust education projects and activities.

## Halina Wind Preston Holocaust Education Committee (HEC) Highlights

**October 2, 2018** – Pathways taking 200 at risk students from downstate to the USHMM

**November 29, 2018** – UD Students visit the Garden of the Righteous Gentiles

**May 2, 2019** – Yom HaShoah midday program at Freedom Plaza

**May 2, 2019** – Yom HaShoah evening program at University of Delaware

**May 4, 2019** – World History Day – joint program with the Jewish Historical Society of Delaware and the Delaware Historical Society

**June 25, 2019** - Teacher's trip to USHMM

In addition to the above highlights, there were ongoing visits to local high schools, houses of worship and community organizations by members of the HEC speaker's bureau. There were also screenings and lectures featuring the "No Denying" documentary.

## Committee Chair

Holocaust Education Committee Chair: Steve Gonzer

# Communicating Our Message

## j-VOICE Monthly

j-VOICE Monthly is a publication of Jewish Federation of Delaware featuring local stories of importance and interest, encouraging editorial submissions on relevant subjects. It also covers international and national news as it relates to Israel. Feature stories and the community calendar highlight local Jewish community activities throughout the state of Delaware and nearby Brandywine Valley. j-VOICE Monthly is available to contributors to the Jewish Federation of Delaware's Annual Campaign or by a contribution directly to j-VOICE Monthly of \$36 or more per year.

j-VOICE Monthly has a printed circulation of 2,500 copies per issue and is currently mailed to 2,000 households as well as distributed state-wide to synagogues and businesses throughout Delaware and the Brandywine Valley. A free digital e-edition is also posted on our website at [ShalomDelaware.org](http://ShalomDelaware.org) each month that expands our reach.

## Committee Chairs

j-VOICE Monthly Committee Chairs:  
Elisha Caplan and Meredith Rosenthal



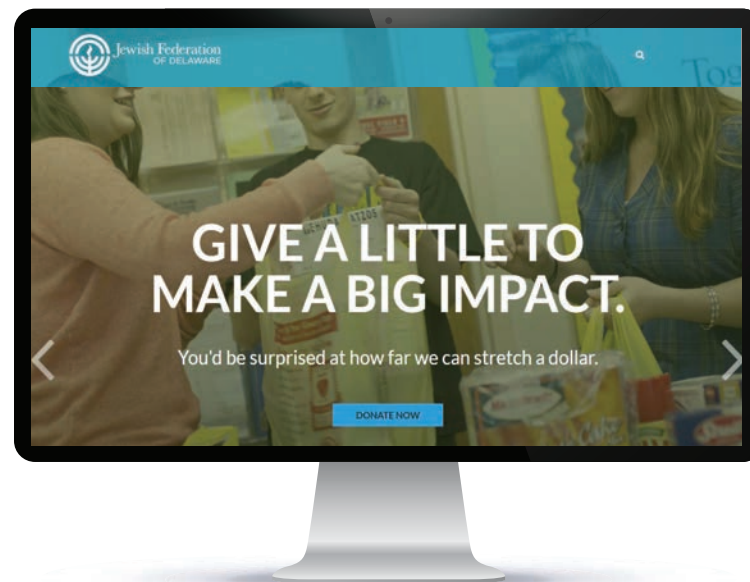
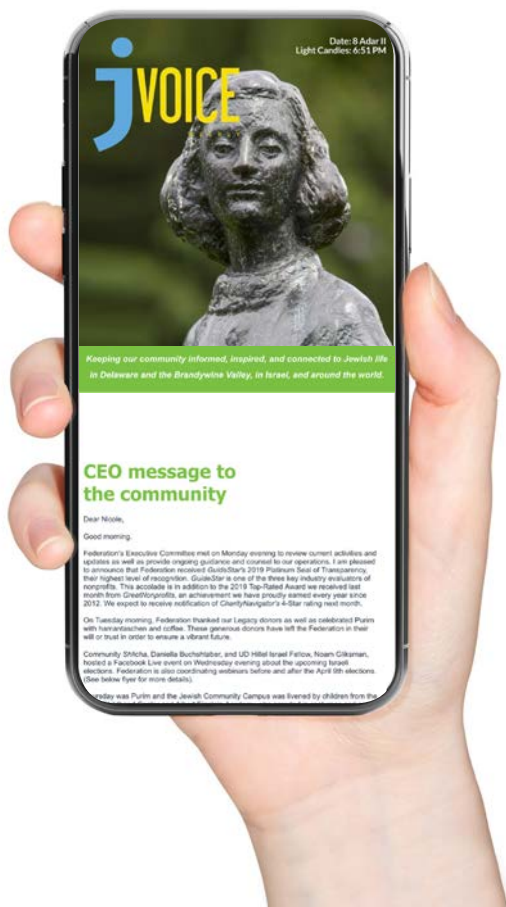
## Shalom Delaware

SHALOM Delaware is the comprehensive annual resource for our Jewish community including information about our beneficiary agencies, organizations, synagogues, programs and services, education and learning, volunteer opportunities, youth activities and so much more.



## j-VOICE Weekly

j-VOICE Weekly is Federation's email sent to nearly 2,000 email addresses every Friday at 6:30 a.m. It provides the community with a quick update on Federation and Jewish community activity as well as current event article links on world Jewry. We generate a consistent 24% open rate each week, which has proven to be a very effective and efficient communication vehicle.



## ShalomDelaware.org

Federation's website is positioned as the community's portal to Jewish Delaware. In addition to Federation content, direct links to our beneficiary agencies and partner sites as well as our synagogues are only a click away. The Community Calendar is also managed and updated by Federation.

## Social Media

With its immediacy and ease of connection, social media continues to play a central role in building relationships and interactions. Community members who are engaged and connected to Federation are willing to spread the word to their social networks, expanding and broadening our reach.

Federation maintains its ongoing social networks through three Facebook pages (Federation, PJ Library and CONNECT), Twitter (@ShalomDelaware), LinkedIn, Instagram and YouTube.



# We Grow Stronger Together

Each gift to Jewish Federation of Delaware's Annual Campaign supports vital services in Delaware and the Brandywine Valley, in Israel and in more than 70 other countries worldwide. These are just a few of the many ways Federation and our local and overseas partners served Jewish needs in 2018-2019.



Teaching Jewish Values

Lending A Compassionate Hand

Sustaining A Social Safety-Net In Delaware

Creating A Welcoming And Inclusive Community

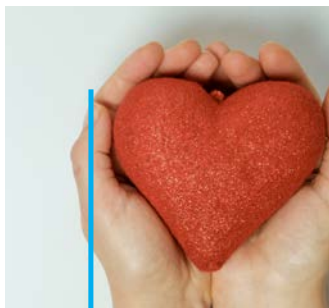


Building A Vibrant And Engaged Community

Developing Future Leaders

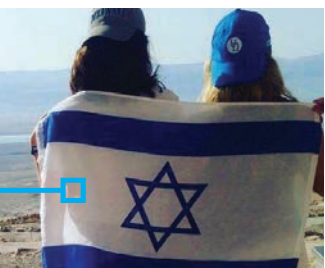
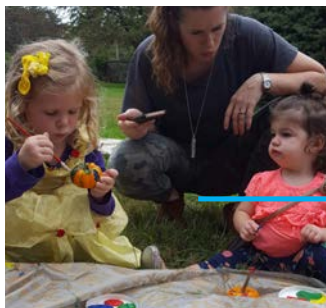


Partnering With The People Of Israel



Providing Emergency Relief

Advancing Jewish Life Worldwide



Helping Seniors Live In Dignity

# Beneficiary Agencies

## Local Beneficiary Agencies



### Albert Einstein Academy

Jared Gellert, President

Rabbi Jeremy Winaker, Head of School

Albert Einstein Academy educates students with a challenging, integrated curriculum of general and Judaic Studies in a nurturing environment which fosters inquisitive learners, critical thinkers and dynamic leaders.



### Siegel Jewish Community Center

Brent Saliman, President

Ivy Harlev, Executive Director

The Siegel JCC strengthens the greater community by nurturing Jewish belonging and encouraging social, physical, and intellectual growth guided by Jewish values and culture.



### Jewish Family Services of Delaware

Regina Kerr Alonzo, President

Basha Silverman, Chief Executive Officer

JFS is committed to strengthening individuals, families, and the community by providing counseling and support services, based on Jewish values.



### Kristol Center for Jewish Life at the University of Delaware (Hillel)

Sheryl Kline, President

Donna Schwartz, Executive Director

UD Hillel enriches the lives of Jewish students so they may enrich the Jewish people and the world.



### Kutz Senior Living Campus

Felisha Alderson, President

Karen Friedman, Executive Director

John Oppenheimer, Interim Executive Director (January 2019)

Kutz Senior Living Campus features Kutz Rehabilitation & Nursing, a 91-bed skilled nursing facility, and Lodge Lane Assisted Living, a 51-unit assisted living facility.

## National and International Partners

### Jewish Federations of North America

Represents 147 Jewish Federations and over 300 Network communities. It is among the top 10 charities on the continent that protects and enhances the well-being of Jews worldwide.

### Jewish Agency for Israel

The Jewish Agency for Israel has worked to secure a vibrant Jewish future and serves as the official link between the Jewish state and Jewish communities everywhere.

### American Jewish Joint Distribution Committee

American Jewish Joint Distribution Committee (JDC) is the world's leading Jewish humanitarian assistance organization.

### World ORT

World ORT is the world's largest Jewish education and vocational training non-governmental organization.

### Taglit-Birthright Israel

Taglit-Birthright Israel provides a gift of first time, peer group, educational trips to Israel for Jewish young adults ages 18 to 32.

### Partnership2Gether

P2G has become the paradigm for successfully partnering global Jewish communities directly with Israeli communities— the Delaware-Arad partnership connects us communally, organizationally and personally.

### Ethiopian National Project

The Ethiopian National Project (ENP) advances the integration of Ethiopian-Israelis into Israeli society. We strive to provide social and educational opportunities.

# Leadership

**President** | William Wagner  
**Vice President** | Russ Silberglied  
**Vice President** | Richard A. Levine  
**Vice President** | Mitchell Steinberg  
**Secretary** | Allison Land  
**Assistant Secretary** | Lisa Dadone-Weiner  
**Treasurer** | Bob Hronsky  
**Assistant Treasurer** | Ken Bubes

## Board of Directors

Jack Blumenfeld  
Diana Caine  
John Elzufon  
Jan Goodman  
Suzanne B. Grant  
Robin Kauffman Saran  
Herb Konowitz  
David Margules  
Michelle Margules  
Jesse Miller  
Andrew Rosen  
Josh Schoenberg  
Connie Sugarman  
David Udoff  
James Zaslavsky

## Jewish Fund for the Future Board of Trustees

Jack Blumenfeld, Chair  
Regina Kerr Alonzo  
Lena Elzufon  
Dan Kristol  
Richard Levine\*  
Hedy Mintz  
Beth Moskow-Schnoll  
Don Parsons  
Andrew Rosen  
David Ross  
Robin Kauffman Saran  
Josh Schoenberg  
Russ Silberglied\*  
Mitchell Steinberg\*  
Connie Sugarman  
William Wagner  
Arlene Wilson

\*Federation Vice Presidents



## Committees & Chairs

### **Allocations Committee**

Russ Silberglied  
Mitchell Steinberg

### **Annual Campaign**

Lisa Dadone-Weiner

### **Audit Committee**

Barbara Schoenberg

### **CONNECT: Young Adult Network**

Maddie Driban

### **Create A Jewish Legacy (CJL)**

Richard A. Levine

### **Facilities Management Board (FMB)**

Arnie Caine  
Robin Kauffman Saran

### **Feasibility Study Task Force**

Leslie Newman  
Barbara Schoenberg

### **Finance Committee**

Bob Hronsky

### **Halina Wind Preston Holocaust Education Committee (HEC)**

Steve Gonzer

### **Human Resources Committee**

Ken Bubes

### **Israel & Overseas Committee**

Michelle Margules  
Gael Szymanski

### **Partnership2Gether**

Robin Karol-Eng

### **Jewish Community Relations Committee (JCRC)**

John Elzufon  
Jennifer Steinberg

### **Jewish Education Committee**

Allison Land  
Connie Sugarman

### **Jewish Fund for the Future (JFF)**

Jack Blumenfeld

### **JFF Grants Committee**

Lena Elzufon

Stuart Nemser

### **JFF Investment Committee**

Suzanne B. Grant

### **j-VOICE Monthly**

Ellisha Caplan  
Meredith Rosenthal

### **Nominating Committee**

Connie Sugarman

### **PJ Library & Shalom Baby**

Taylor Clearfield

### **PJ Our Way**

Ellisha Caplan

Liz Platsis

### **Super Sunday**

Lisa Dadone-Weiner

### **Women's Philanthropy**

Barbara Blumberg  
Michelle Silberglied  
Jennifer Steinberg

## Synagogue Leadership

### **Adas Kodesch Shel Emeth**

Alan Bleier, President  
Rabbi Steven Saks

### **Chabad Lubavitch of Delaware**

Rabbi Chuni Vogel  
Rabbi Motti Flikshtein

### **Congregation Beth Emeth**

Jennifer Steinberg, President  
Rabbi Yair Robinson

Rabbi Elisa Kopel

Cantor Elizabeth Flynn

### **Congregation Beth Shalom**

Jodie Pezzner, President  
Rabbi Michael Beals

Cantor Elisa Abrams Cohn

### **Congregation Beth Sholom**

Caroline Schwartz, President  
Rabbi Peggy deProphetis

### **Seaside Jewish Community**

Buddy Feldman and Alyssa Simon, Co-Presidents  
Rabbi Lisa Levine

### **Temple Beth El**

Arlene Johnson and Linda Oster, Co-Presidents  
Rabbi Jacob Lieberman

# Total Financial Resources

(projected for 2019)

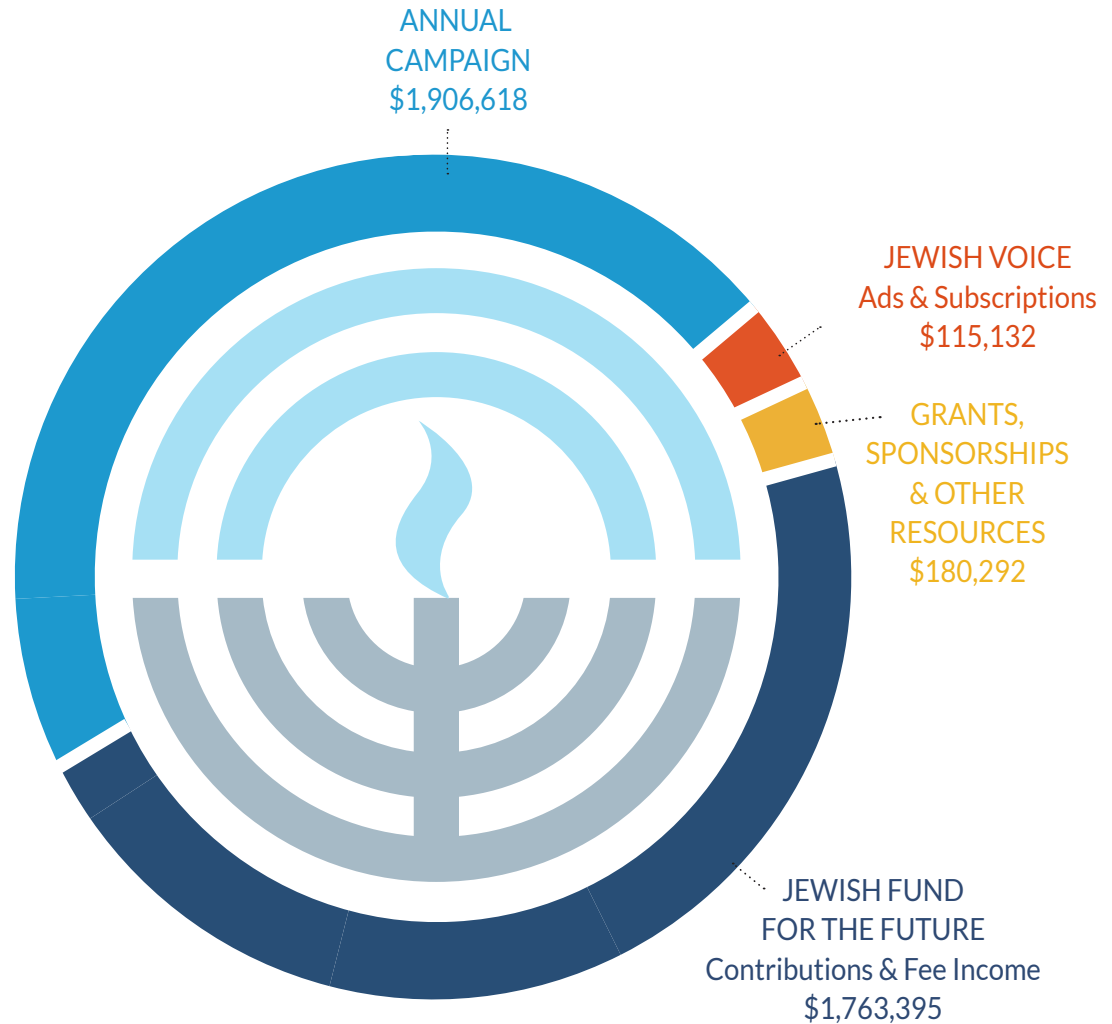
**TOTAL DOLLARS**  
**\$3,965,437**

**ANNUAL CAMPAIGN**  
\$1,906,618

**JEWISH VOICE**  
Ads and Subscriptions  
\$115,132

**GRANTS,  
SPONSORSHIPS  
& OTHER RESOURCES**  
\$180,292

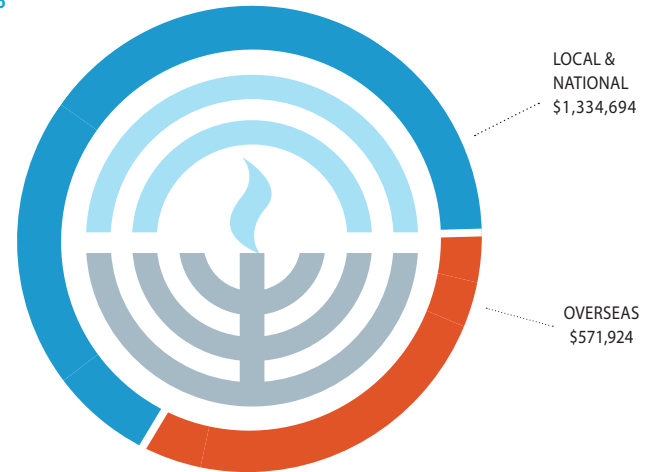
**JEWISH FUND  
FOR THE FUTURE**  
Contributions and  
Fee Income  
\$1,763,395



# 2019-2020 Distribution & Funding

TOTAL ALLOCATIONS  
\$1,906,618

LOCAL & NATIONAL-70%  
OVERSEAS - 30%



## LOCAL

**\$1,333,194**

### Beneficiary Agencies:

• Siegel JCC	\$210,000
• Albert Einstein Academy	\$124,500
• University of Delaware (Hillel)	\$89,000
• Jewish Family Services of Delaware	\$76,500
• Kutz Senior Living Campus	\$45,000

### Affiliated Agencies and Community Initiatives:

• Chaplaincy	\$19,516
• Board Directed Jewish Education & Identity	\$12,500
• Community Outreach	\$10,000
• PJ Library	\$8,000
• BBYO (Local and Regional)	\$7,500
• Chabad at the University of Delaware	\$5,000
• Southern Delaware/Rehoboth Beach	\$5,500
• Southern Delaware/Dover	\$1,500
• Jewish Historical Society of Delaware	\$1,272

### Jewish Federation of Delaware:

• Financial Resource Development	\$268,171
• Administration	\$150,235
• Outreach and Engagement	\$137,517
• Jewish Community Relations Committee	\$70,803
• Jewish VOICE	\$66,742
• CONNECT: Young Adult Network	\$23,938

PJ Library\*  
Shalom Baby\*  
One Happy Camper\*  
Women's Philanthropy\*\*

\* Included in Administration

\*\* Included in FRD

## NATIONAL

**\$1,500**

• Jewish Council on Public Affairs (JCPA)	\$1,000
• Jewish Communal Service Association (JPRO)	\$500

## OVERSEAS

**\$571,924**

Jewish Federations of North America:	\$400,648
Jewish Agency for Israel	
American Jewish Joint Distribution Committee	
World ORT	
• Young Emissary/Community Shaliach	\$80,000
• Special Projects in Arad	\$35,000
• Birthright Israel	\$18,776
• Partnership Together (P2G)	\$15,000
• Ethiopian National Project (ENP)	\$10,000
• FRD Mission	\$7,500
• Israel Programming (Yom Ha'Atzmaut/Film Series)	\$5,000
• Israel Action Network (IAN)	\$500

# Jewish Fund for the Future

**The Jewish Fund for the Future**, the planned giving and endowment arm of the Federation, ensures the vitality and future of our Jewish community in Delaware, Israel and throughout the world. The Jewish Fund for the Future works with individuals and families, financial advisors, along with Federation beneficiary agencies and area synagogues to help donors create Jewish legacies.

The Fund has surpassed \$26.5 million in endowment assets, the highest in its history. Overseeing 211 community endowment funds, the Jewish Fund for the Future continues to serve as a responsible steward of these legacies by providing support for new programs, stabilizing existing programs and supplementing agency and synagogue needs.

The Jewish Fund for the Future allows donors to meet their personal, family and financial charitable goals. Donors are able to establish their legacy fund today and provide for it in the future using a simple bequest or other source. Endowment legacy funds can be established using cash, securities, real estate or other property, life insurance, IRA or pension plan assets, a charitable trust and private foundation grants.

**Jewish Fund for the Future Chair:** Jack Blumenfeld

**JFF Investment Committee Chair:** Suzanne B. Grant

**JFF Investment Committee Vice-Chair:** Dan Kristol

**JFF Grants Committee (Science & Technology) Co-Chair:** Stuart Nemser

**JFF Grants Committee (Scholarship & Education) Co-Chair:** Lena Elzufon

The Jewish Fund for the Future received over \$1.6 million in contributions representing legacy gifts as well as to synagogues, agencies, Federation and other Jewish organizations throughout Delaware. Distributions from the Jewish Fund for the Future continue to benefit a diverse array of cultural, educational, social and humanitarian causes.

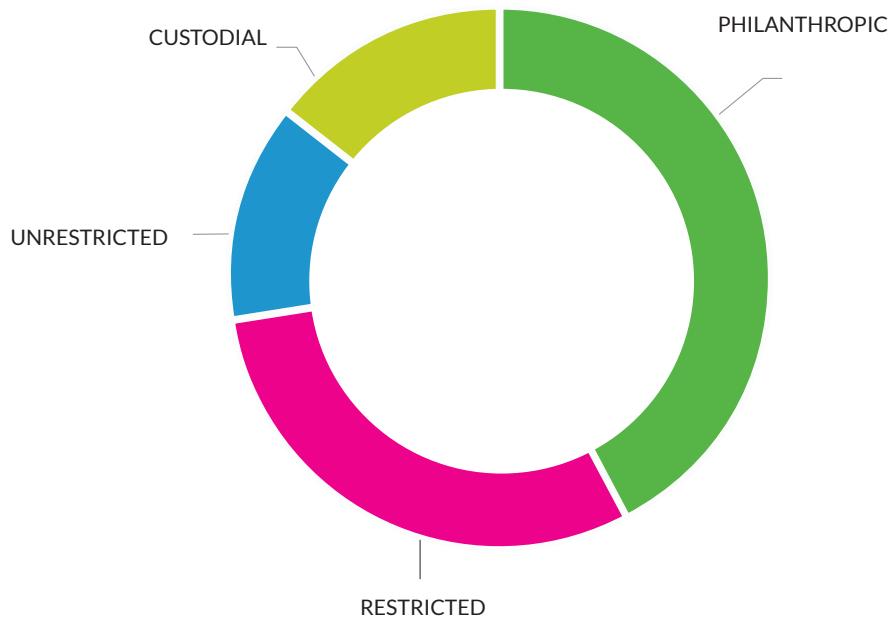
- \$1,056,801 went directly to Delaware Jewish agencies, synagogues and Federation for support
- \$79,470 benefitted national Jewish organizations
- \$280,504 to Israel (including agricultural research projects)
- \$56,570 was distributed for scholarships



## CALENDAR YEAR 2018 FUND DISTRIBUTIONS

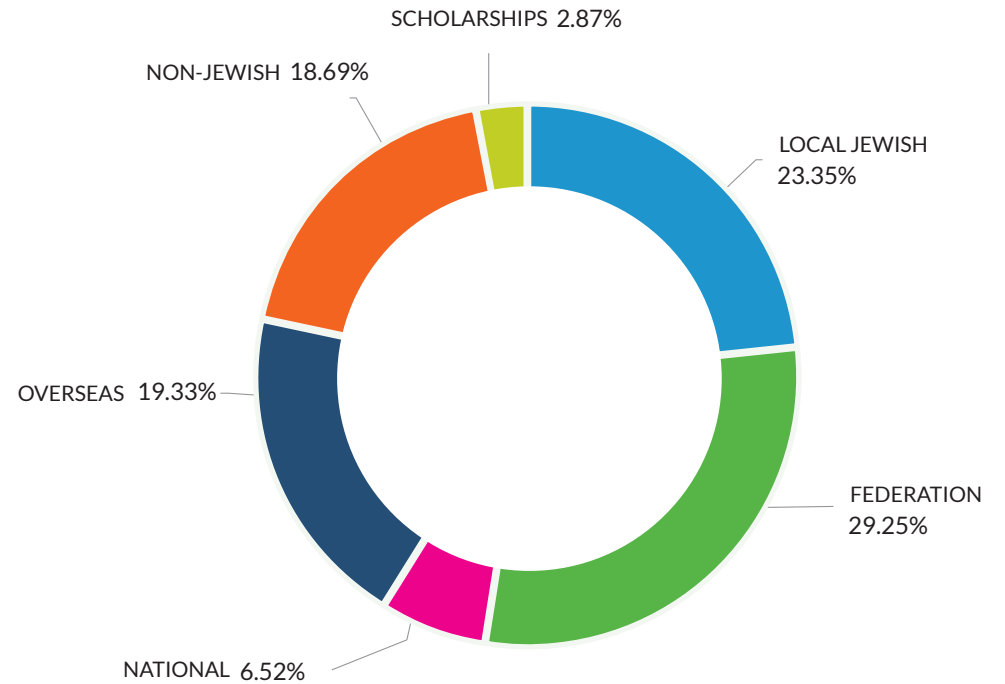
**TOTAL - \$1,766,022**

RESTRICTED - \$534,990  
 PHILANTHROPIC - \$746,759  
 CUSTODIAL - \$252,122  
 UNRESTRICTED - \$232,151



## 2018 TOTAL FUND DISTRIBUTIONS

LOCAL JEWISH - 23.35%  
 FEDERATION - 29.24%  
 NON-JEWISH - 18.69%  
 OVERSEAS - 19.33%  
 NATIONAL - 6.52%  
 SCHOLARSHIPS - 2.87%





Jewish Federation  
OF DELAWARE

# Create a Jewish Legacy

**Create a Jewish Legacy** is a community-wide initiative comprised of strategic alliances with Delaware's Jewish organizations. Agencies, synagogues and the Jewish Federation of Delaware/Jewish Fund for the Future are working together to secure legacy gifts and bequests, helping to ensure a sustainable future in the Delaware Jewish Community. Partnering organizations receive the tools and resources necessary for developing Jewish legacies including education, training, marketing and consultation.

Leaving a Jewish legacy allows individuals and families to support the Jewish causes they care so deeply about; empowering our community to continue the sacred work of tikkun olam while ensuring the traditions and values of our institutions will continue in perpetuity.

Create a Jewish Legacy receives support through local donations, a grant from the Harold Grinspoon Foundation/Life & Legacy™ and the Jewish Fund for the Future.

Thanks to the generosity of our community we have received 666 Legacy commitments with an estimated value of \$16.8 million.

## Highlights

**November 8, 2018** – Refresh Your Legacy Program with Dena Morris Kaufman

**November 19, 2018** – End of Year 3 Celebration

**March 19, 2019** – Hamantaschen and Coffee Stewardship Event

**May 28, 2019** – Year 4 CJL Training

## Committee Chair

**Create a Jewish Legacy Chair:** Richard A. Levine

# Federation Professional Team

## Chief Executive Officer

Seth J. Katzen

## Administration

Dana Warwick- Office Manager

## Community Shlichah and Young Adult Outreach

Daniella Buchshtaber

## Financial Resource Development

Wendy Berger, Senior Vice President,

Financial Resource Development

Gina Kozicki, Associate Endowment Director

Shari Dym, Create A Jewish Legacy Program Manager

Nicole Terranova, Events and Marketing Coordinator

## Finance

Rob Rogers, Chief Financial Officer

Terri O'Neal, Controller

Kathy Michaels, Bookkeeper

## Holocaust Education Committee

Gina Kozicki, Staff Liaison

## Jewish Community Relations Committee

Rabbi Ellen Bernhardt

## j-Voice Monthly

Jaidy Schweers, Editor

Dana Warwick, Advertising Representative

## PJ Library & Shalom Baby

Jamye Cole, PJ Library Coordinator



# 2018-2019 Awards and Recognition



**AVA DIGITAL AWARDS** is an international competition honoring excellence in digital creativity, branding and strategy.

2018 GOLD AWARD /  
NONPROFIT WEBSITE



**ASSOCIATION OF FUNDRAISING PROFESSIONALS (AFP) COMMUNICATION AWARDS** recognizes and honors not-for-profit organizations whose communications demonstrate excellence, quality, creativity and overall effectiveness.

2018 AWARD / NEWSLETTER  
2018 AWARD / SPECIAL EVENT  
2018 AWARD / SPECIAL PUBLICATION



**APEX AWARDS FOR PUBLICATION EXCELLENCE** is an annual competition for publishers, editors, writers and designers who create print, Web, electronic and social media.

2018 AWARD OF EXCELLENCE/  
J-VOICE MONTHLY



**THE COMMUNICATOR AWARDS** is the leading international awards program recognizing big ideas in marketing and communications.

2019 AWARD OF EXCELLENCE /  
2017-2018 GRATITUDE REPORT AND  
SHALOM BABY LOGO  
2018 AWARD OF DISTINCTION /  
2016-2017 ANNUAL REPORT AND  
OVERALL PUBLICATION



**DAVEY AWARDS** Honors the best web, design, video, advertising and mobile from small firms worldwide.

2018 SILVER AWARD /  
2017-2018 REPORT TO THE COMMUNITY



**HERMES CREATIVE AWARDS** is an international competition for creative professionals involved in the concept, writing and design of traditional and emerging media.

2019 GOLD AWARD /  
OVERALL PUBLICATION  
2019 GOLD AWARD /  
2017-2018 GRATITUDE REPORT  
2018 PLATINUM AWARD /  
OVERALL PUBLICATION  
2018 GOLD AWARD /  
2016-2017 REPORT TO THE COMMUNITY



**MARCOM AWARDS** is an international creative competition recognizing outstanding achievement by marketing and communications professionals.

2018 GOLD AWARD /  
NONPROFIT WEBSITE



**NONPROFIT PR AWARDS** Honors the hard work and creativity of nonprofit organizations who led the way in PR and who make the world a better place.

2018 HONORABLE MENTION /  
BRANDING CAMPAIGN

# WE GROW STRONGER TOGETHER





Jewish Federation of Delaware protects and enhances the well-being of Jews worldwide through the values of tikkun olam (repairing the world), tzedakah (charity and social justice) and Torah (Jewish learning).



## Jewish Federation of Delaware

101 Garden of Eden Road • Wilmington, DE 19803 • 302/427-2100 • JFDinfo@ShalomDel.org • ShalomDelaware.org

Connect with us:



@ShalomDelaware



www.facebook.com/shalomdelaware



www.linkedin.com/company/jewish-federation-of-delaware



www.youtube.com/user/ShalomDelaware



@ShalomDelaware